

Butterfly Valves

Type 17800 - Butterfly Valve, Top Entry



Cryogenic Butterfly Valves Top Entry Butt Weld Type, PN16

Manual operated with gear unit

Also available in PN10 and PN25

Type test approval acc. to DIN 12567 for LNG use

“ Fire safe ” type test approval acc. to EN ISO 10497

Available options - on request only:

- Further connection types
- Pressure range
- Accessories

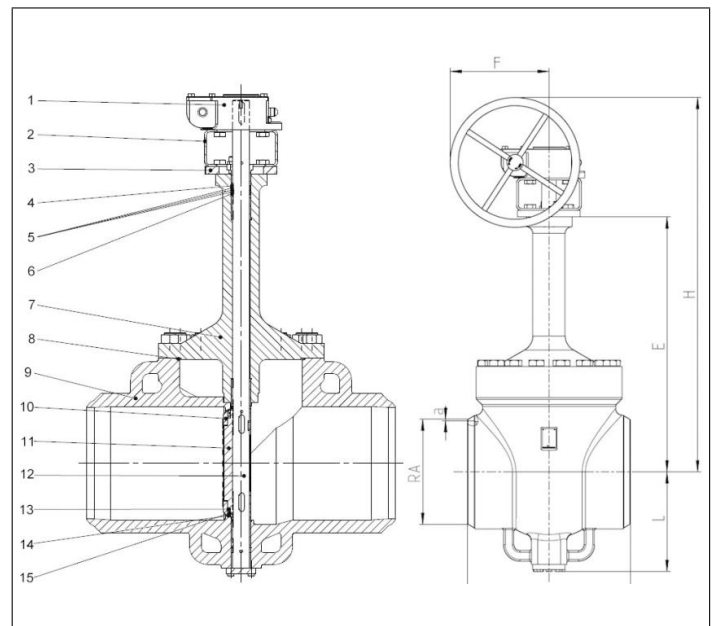


Applications:

Approved for LNG Marine applications. Other applications on request only.

Working temperature: -196°C / -321°F (77K) up to +100°C / +212°F (373K)

Materials	DIN EN	ASTM
1 Gearbox	GG25 offshore painted	
2 Bracket	1.4404/1.4571	316L/316Ti
3 Flange	1.4404	316L
4 Gland packing	Graphite braid	
5 Gland packing	Graphite	
6 Gland packing	Graphite braid	
7 Topwork	1.4408	316
8 CSI ring	Inconel	
9 Body	1.4408	316
10 Clamp ring	1.4404/1.4571	316L/316Ti
11 Disc	1.4408	316
12 Shaft	1.4980/1.4571	-/316Ti
13 Seal	1.4571	316Ti
14 CSI ring	Inconel	
15 CSE ring	Inconel	



Type 17800 - Standard design	Technical data							
Nominal size	DN	100	150	200	250	300	350	400
Face-to-face dimension	FF	305	403	418	457	502	762	838
Max. Height (depending on PN)	H	876	980	1091	1183	1209	1330	1406
Outside pipe-Ø ISO 1127	RA	114.3	168.3	219.1	273.0	323.9	355.6	406.4
Wall thickness pipe ISO 1127	a	3.6	4.5	6.3	7.1	8.0	8.0	8.8
Outside pipe-Ø ASTM A312	RA	on request						
Wall thickness pipe ASTM A312	a	on request						
Length	E	662	703	740	779	805	825	885
Length	L	158	204	241	281	307	333	383
Length (depending on PN)	F	152	152	221	286	355	355	380
Max. Weight (depending on PN)	ca. kg	46.0	82.0	145.0	244.0	299.0	452.0	640.0
Kvs-Value	m ³ /h	258	654	1443	2431	3720	5120	7321
Cv-Value	gal/min	300	760	1680	2850	4314	5953	8513

Dimensions in mm.